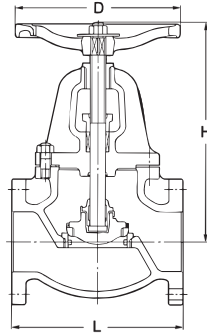


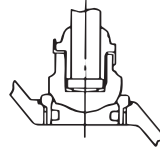
Fig. 125FCJ (Bronze trim)
Fig. 125FCJS (13 Cr. trim)



Class 125



200 psi. Water, oil, Gas 65°C
 125 psi. Saturated steam
 350 psi. Hydrostatic shell test
 220 psi. Hydrostatic seat test
 80 psi. Pneumatic seat test



Size 2" only

**Bolted bonnet, outside screw & yoke,
 rising stem, conical disc.**

Materials

Parts	JIS materials	
	125FCJ	125FCJS
Body	A126 Class B	
Bonnet	A126 Class B	
Stem	No.C37700	Type 403
Disc	Size 2"	B62
	Size 2 1/2" to 8"	A126 Class B
Seat ring	B62	F6a
Gland	Ductile iron	
Gland packing	Asbestos-free	
Gasket	Asbestos-free	
Gland bolt/nut	Carbon steel	
Bonnet bolt/nut	Carbon steel	
Hand wheel	A126 Class B/Ductile iron(size 8" only)	
Flanged ends	ASME B16.1	
F-F dimension	ASME B16.10	
Wall thickness	KITZ Std.	

Dimensions

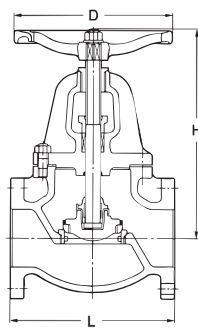
Valve size	mm inch	50	65	80	100	125	150	200
		2	2 1/2	3	4	5	6	8
L Face-to face		203	216	241	292	330	356	495
H Height (OPEN)		277	307	353	404	454	533	642
D Handwheel Diameter		180	180	225	280	300	350	450

**Bolted bonnet, outside screw & yoke,
 rising stem, conical disc.**

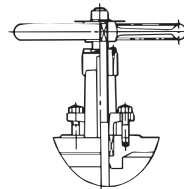
Fig. 10FCJ (Bronze trim)
Fig. 10FCJS (13 Cr. trim)



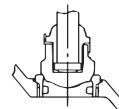
Class JIS 10K



120°C Non-shock water 1.37 MPa (14 kgf/cm²)
 120°C Water, oil, air 0.98 MPa (10 kgf/cm²)
 120°C Gas 0.20 MPa (2 kgf/cm²)
 Saturated steam..... 0.69 MPa (7 kgf/cm²)
 Hydrostatic shell test2.06 MPa (21 kgf/cm²)
 Hydrostatic seat test1.51 MPa (15.4 kgf/cm²)



Size 12" only



Size 1 1/2" & 2"

Material

Parts	JIS materials	
	10FCJ	10FCJS
Body	FC200	
Bonnet	FC200	
Stem	C3771BD	SUS403
Disc	Size 1 1/2" & 2"	BC6
	Size 2 1/2" to 12"	FC200
Seat ring	BC6	SUS403
Lock nut	Size 1 1/2" to 4"	BC6
	Size 5" to 12"	SCS1
Gland	FCD-S	
Gland packing	Asbestos-free	
Hand-wheel	Size 1 1/2" to 6"	FC250
	Size 8" to 10"	FCD400
	Size 12"	FC200
Washer	SS400	
Gasket	Asbestos-free	
Gland bolt/nut (12" only)	SS400	
Bonnet bolt/nut	SS400	
Set screw (Size 12")	SCM435	

Dimensions

Valve size	mm inch	40	50	65	80	100	125	150	200	250	300
		1 1/2	2	2 1/2	3	4	5	6	8	10	12
L Face-to face		190	200	220	240	290	360	410	500	620	700
H Height (open)		260	277	307	353	404	454	533	642	665	883
D Handwheel Diameter		160	180	180	225	280	300	350	450	450	500