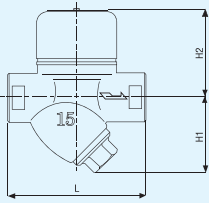


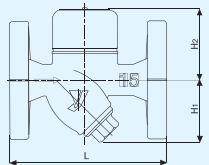
STEAM TRAPS

Dimensions & Weight



TD-10NA (mm)

Size	L	H1	H2	Weight(kg)
15A	90	49	58.5	0.9
20A	90	53	60.5	1.2
25A	90	56	62.5	1.4



TD-30NA (mm)

Size	L	H1	H2	Weight(kg)
15A	125	51	59	2.3
20A	140	54	63	3.4
25A	150	65	63	4.1

TD-10NA



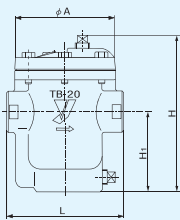
TD-30NA



● Specification

Model	TD-10NA	TD-30NA	
Application	Steam condensate		
Operating Pressure	0.035~2.0MPa (0.35~20kgf/cm ² G)	0.035~1.0MPa (0.35~10kgf/cm ² G)	0.035~2.0MPa (0.35~20kgf/cm ² G)
Allowable Back Pressure	Less than 50% of inlet pressure		
Maximum Temperature	220°C		
Material	Body	Ductile cast iron	
	Disc/Valve seat	Stainless steel	
Connection	JIS Rc(PT) Screwed	JIS 10KFF Flanged	JIS 20KFF Flanged

Dimensions & Weight



(mm)

Nominal Size	Connection	L	H	H1	A	Weight (kg)
15A	Rc 1/2	136	183	94	117	4.3
20A	Rc 3/4					
25A	Rc 1					

TB-20



TB-20

Model	TB-20			
Nominal size	15A, 20A, 25A			
Application	Steam condensate			
Working pressure	(A) 0.01~0.3MPa (0.1~3kgf/cm ² G)	(B) 0.2~0.6MPa (2~6kgf/cm ² G)	(C) 0.3~1.0MPa (3~10kgf/cm ² G)	(D) 0.6~1.6MPa (6~16kgf/cm ² G)
Min. differential pressure	0.01MPa (0.1kgf/cm ²)	0.03MPa (0.3kgf/cm ²)	0.10MPa (1kgf/cm ²)	0.10MPa (1kgf/cm ²)
Max. temperature	220°C			
Connection	JIS Rc (PT screwed)*			
Material	Body	Ductile cast iron		
	Valve	Stainless steel		
Valve seat	Stainless steel			

- Energy saving
- Energy efficiency
- Unique design for long life
- High corrosion resistant

*NPT connection is also available.